



## Analysis of Community Appreciation in Urban Governance Through 'Soul And Body' Approach in Bandung City

Rosa Saefi Yusuf Albanah\*, Lailannur F.H Harahap, Nadya Prasanti Irwan

Institut Teknologi Bandung, Bandung, Indonesia  
Correspondence: E-mail: [rosasaefiyusuf@gmail.com](mailto:rosasaefiyusuf@gmail.com)

### ABSTRACT

This study aims to determine the level of community appreciation and its influence on development through the 'soul and body' approach and the influence of the city's soul on the city's body to support the development of the city of Bandung. The results show that the indicators of the soul that have the highest value are identity, attachment, and satisfaction, while the indicators of the body that have the highest value include commercial services, culture and arts, and diversity, and there is a significant influence of the city's soul on the body of the city. It was concluded that the city of Bandung has a strong urban soul that has a positive effect on the city body. This indicates the appreciation of the community for improving the management and development of Bandung city. Recommendations for the government to seek in development to pay attention to community participation in planning and governance processes through collaborative planning techniques, strengthen communicative rationality and institutional planning through a sociological institutionalism approach to create urban prosperity and balance.

### ARTICLE INFO

**Article History:**

Submitted/Received 31 Jan 2023

First Revised 22 May 2023

Accepted 29 Jun 2023

First Available online 28 Jun 2023

Publication Date 29 Jun 2023

**Keyword:**

Adaptation,

Innovation,

Pedagogy,

Traditional Method.

## 1. INTRODUCTION

Since the outbreak of Covid-19 two years ago, this pandemic has disrupted education systems globally, affecting the most vulnerable students. The closure of almost an entire school year and the lack of connectivity and devices make it difficult for students to learn distance. This problem has increased inequality and exacerbated the pre-existing education crisis. This year 2022, regardless of the Omicron variant, schools have reopened in most countries, including Indonesia, supported by health and safety protocols and vaccination programs. This requires much money to support students to maintain their learning, health, and well-being and stay in school. Prioritizing education as a primary public interest is critical to avoiding generational catastrophes and promoting sustainable recovery. To be more resilient, equitable, and inclusive, education systems must transform, leveraging technology to benefit all learners and building on the innovations and partnerships catalyzed during this crisis.

The development of a region is influenced by different levels of urbanization. Economic development and further human development cannot ignore the process of urbanization (Alamulhim, et.al., 2022), so that it greatly affects the changes in urban areas physically and socioeconomically. Urbanization has occurred along with population growth in rural and urban areas, this phenomenon has become one of the major challenges faced by major cities in the world which causes 55% of the world's population to live in urban areas with estimates that it will increase to 70-75% by 2050. On a national scale based on the results of the Inter-Census Population Survey (SUPAS) in 2015 showed that Indonesia's population reached 135.61 or 55.2% of the total population lived in urban areas thus the data indicated that the proportion of Indonesia's population classified as an urban population.

Spatially, the growth of cities is accompanied by the process of urban development that widens (extended urban formation) from the core city to the surrounding area, this is due to the growth and activity of the population cannot be accommodated by the core area so that it requires a buffer area for the provision of housing and settlement needs as well as other activities such as industry, trade and services (Mardiansjah and Rahayu, 2019). The number and size of cities are increasing rapidly which makes large cities have a population of more than 10 million people (Kourtit and Nijkamp, 2019). The spatial development of the area in the Bandung area built a widening urban formation (Mardiansiah and Rahayu, 2019) which encouraged the Bandung City to transform into the Greater Bandung Metropolitan area. Demographically, the Bandung City has 2,452,900 inhabitants with a density level of 14,388 km<sup>2</sup>, this indicates that the Bandung City is included in the city with a metropolitan category.

A major challenge in urban governance is how to create spaces that satisfy residents and visitors and stimulate small-scale visual and authentic experiences that lead to increased economic benefits in the form of tax revenues for the city. In addition, urban challenges in terms of infrastructure such as inadequate transportation, traffic congestion, inappropriate land use, sanitation, water shortage, etc. (Kourtit and Nijkamp, 2019) as well as other important issues related to climate change that force development to prioritize land use in urban governance (Jain and Rohracher, 2022).

These challenges are very important to be considered by the Bandung City as one of the cities experiencing population growth due to urbanization. The new urban world concept places residents as cognitive and active agents in decisions, priorities and behaviors that impact the current and future development of the city as well as being environmentally conscious. These are contemporary characteristics of urbanization that play a dominant role in cities in a sustainable, resilient and inclusive manner. The development process needs to be balanced by community participation through appreciation of various views of urban

conditions in accordance with the development of thought and sensitivity to the environment, with the phenomenon of mind development (cognitive dynamics) and environmental patterns (environmental dynamics) interrelated to form world urban geography (Kourtit and Wahlstrom, 2021).

Thus, to create a more efficient, effective, and sustainable development of urban areas, it is necessary to conduct a study regarding the extent of people's appreciation of the city where they live through the 'soul and body' approach. The research questions are: (1) what is the level of community appreciation of development in the Bandung City? and (2) how does the soul affect the body of the city in the Bandung City? This research aims to find out the appreciation of the community and its influence on development through the 'soul and body' approach and the influence of the city soul on the city body to support the development of the Bandung City.

## 2. LITERATURE REVIEW

The city is the center of settlements and population activities that have administrative boundaries regulated by laws and regulations and settlements that have shown the character and characteristics of urban life. The concentration of a city's population is denser than the surrounding area because there is a concentration of functional activities related to the activities of its population. The population of a city is relatively large at a minimum of 10,000 people and has a limited area. Cities are usually non-agrarian in nature with 75% of the population's livelihoods outside of agriculture. The population density of a city is relatively high with a minimum of 50 people/hectare. As well as functioning as a collection and distribution center for goods and services in the form of facilities and infrastructure for changing modes of transportation.

According to Mumford (1961), the pattern of human activity in geographical space "swings between the two poles of movement and settlement patterns" (Naude and Krugell, 2009). Settlement patterns emerge permanently from rural villages to metropolitan areas. The number and size of cities have increased drastically around the world into megacities with more than 10 million inhabitants. The city, apart from functioning as a place to live or shelter and a starting place for the development of family life and livelihood, is one of the basic needs for improving the quality of human life. And the realization of people's welfare is marked by an increase in the quality of life that is decent and dignified and gives the main attention to the fulfillment of housing needs as one of the basic human needs.

City soul is a concept originally introduced by Hueffer in 1905. The soul in humans cannot be seen like feelings, thoughts, wishful thinking and so on. The city soul also describes the attractiveness of cities based on income, provision of public services and housing, and quality of life factors such as cost of living. City body is understood as the visible and tangible part or so-called built-up areas such as residential settlements, offices, industrial buildings, monuments, green areas, waterways, infrastructure, ports, sports and entertainment facilities, and so on. These material components of the city are shaped or adjusted over time by human decisions so as to make the city structure more suitable for contemporary purposes. The body of the city is thus a complex result of the responses of urban society. A city's service facilities such as education, health, arts and recreation, as well as place-specific characteristics, for example, beautiful physical setting, urban atmosphere, lifestyle, entertainment, culture, openness, and tolerance, are part of the city body (Whisler, et al., 2008).

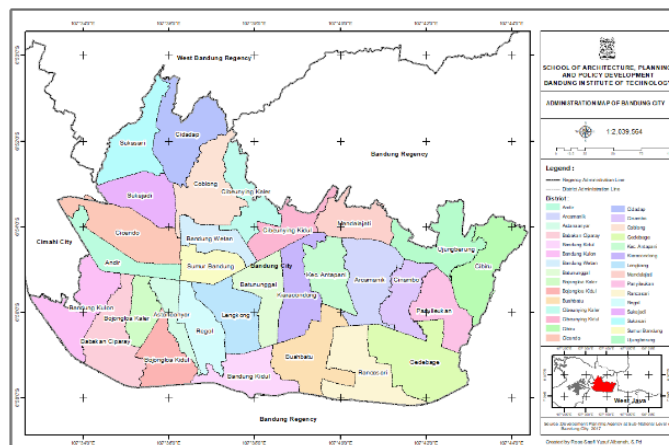
The city body can also ultimately shape the feeling of the city soul in terms of satisfaction with city life and the built environment. The attractiveness of a city is definitely a difficult

concept to measure. There is almost no clear benchmark of city attractiveness, because (1) cities are complex spatial entities that serve the needs of many heterogeneous inhabitants; (2) several disciplines such as sociology, psychology, economics, and planning have different understandings of the nature of attractiveness; and (3) the assessment of attractiveness depends between the objective and the subjective i.e. on expressed preferences using evaluation methods, the presence of public facilities, social conditions, urban atmosphere, economic growth potential or using historical and cultural identities are so broad, that simple and conclusive assessment indicator is difficult to determine. As a result, urban planning is often groping due to a lack of information that can support transparent urban decision-making based on a strategic and rational planning paradigm. Therefore, it is not surprising that in the absence of indisputable planning in the formation of the urban fabric, urban scientists often resort to alternative planning modes, such as communicative planning based on public participation as well as new urbanism approaches with an emphasis on the human scale (Mawkhlieng and Debbarma, 2018 ; Setiowibowo, et.al., 2020).

The synthetic denominator 'love of the city' is a composite expression of an individual's appreciation of city life as a product of his or her body and soul. Measuring city love aims to identify and assess the quality of life as perceived by residents. Measuring city love requires a thorough analysis of how the city's strengths are affected by external conditions, such as economic recession, politics, natural disasters, population migration and regime change that can break down into interconnected body and soul. This measurement has far-reaching implications for the assessment of the quality of life in cities and for the evaluation of people's appreciation of cities as places to live.

### 3. METHODS

This research uses a descriptive quantitative method with a simple linear regression data analysis technique through questionnaire data collection technique and field observation with snowball sampling method with a total of 100 correspondents. The approach used to determine the level of community participation in urban development through the 'soul and body' approach which is then referred to as the city love index or city love. Simple linear regression data analysis was conducted to determine the effect of the soul on the city body. Simple linear regression is an equation model that describes the relationship of one independent variable (X) to one dependent variable (Y), described by a straight line. In the context of this research, the independent variable is the city soul (X), and the dependent variable is the city body (Y). More details on the focus of the research subject can be seen in the following **Figure 1**.



**Figure 1.** Research location in Bandung City.

The Likert scale was used to obtain data on people's aspirations for the city love index variables and then the processing and interpretation of the questionnaire results in an evaluation of Bandung city governance with indicators of the soul and body of the city (Table 1). This research was conducted in the Bandung City, West Java Province, Indonesia, with an administrative boundary consisting of 30 sub-districts as field observation locations (Figure 1). More details on the focus of the research subject can be seen in the following **Table 1**.

**Table 1.** Likert's scale

No.	Scale	Score
1.	Sangat Tidak Setuju	1
2.	Tidak Setuju	2
3.	Netral/Ragu-ragu	3
4.	Setuju	4
5.	Sangat Setuju	5

## 4. RESULTS AND DISCUSSION

### 4.1. City Love Index

Field data processing was carried out by recapitulating the questionnaire calculations taken by taking the average value of the city soul and body variables. Variables grouped as city soul include identity, relatedness, ownership, pride, identification, satisfaction, loyalty (not moving and recommending), employment, and income. Meanwhile, city soul variables or city characteristics include housing, government, reputation and stories, meeting place services, aesthetics, access to nature, culture and arts, commercial services, public services, diversity, and getting around. The following are the results of the recapitulation of the city love index sorted from the highest value to the lowest value (Table 2).

**Tabel 2.** City love Index

	Parameter	Value
<b>Soul</b>	Identity	4,49
	Attachment	4,28
	Satisfaction	4,00
	Pride	3,97
	Possession	3,77
	Identification	3,64
	Employment	3,40
	Loyalty: No Move	3,35
	Loyalty: Recommend	3,27
	Income	3,00
<b>Body</b>	Commercial Services	4,54
	Culture and Arts	4,45
	Diversity	4,33
	Meeting Place Services	4,26
	Meeting Place Services	4,06
	Aesthetic	4,04
	Access to Nature	3,97
	Public Service	3,84
	Housing	3,80
	Tour	3,71
Government	3,22	

Based on the results of the questionnaire recapitulation, it can be seen that the city soul index that has the highest value, namely: (1) identity: "Bandung has a strong identity" with a score of 4.49, as we know that Bandung is one of the major cities in Indonesia that has a strong identity; (2) attachment: "I feel attached to the Bandung City" with a score of 4.28, people's attachment to the place where they live has a strong connection, the attachment can be influenced by interactions and emotions, knowledge, beliefs, and actions that refer to the place (Jorgensen and Stedman, 2006) and (3) satisfaction: "overall, I feel satisfied with this city" with a score of 4.00, community satisfaction with various facilities in the Bandung City should be given appreciation where most of the planning and development results in a balance of urban ecosystems, this satisfaction will affect the happiness of the community to live and achieve prosperity. The welfare in question refers to the satisfaction people get when they achieve their desired goals including the hope of having a city that matches the dreams of the people of Bandung (Figure 2).



**Figure 2.** Average Relationship of Population and Relationship to Characteristic Group.

The assessment results obtained are based on assumptions and social perceptions of residents in the Bandung City. On the other hand, the city soul index that has the lowest value, namely: (1) employment with a value of 3.40, population satisfaction with the availability of jobs and minimum wages still shows a less significant value, however, on the other hand there is an increase of 65.31 percent in the labor force participation rate (TPAK) of Bandung City in a period of 1 year in 2020-2021, in other words, although there is dissatisfaction with jobs and minimum wages for additional jobs and labor continues to increase; (2) loyalty: not moving with a value of 3.35, at this index value there is a tendency for people to move to peripheral areas related to housing needs, urban environmental conditions, and the population's economy (Setiawan, 2010) (3) loyalty: recommend with a value of 3.27 which will be closely related to the environment, economy and social in an area, with this, these aspects have not been able to provide a high sense of loyalty to the residents of Bandung City; and (4) income with a value of 3.00, satisfaction with the minimum Regional Minimum Wage (UMR) which is minimal will cause turnover intention because there is job dissatisfaction with rewards or rewards (Umar, 2012).

In this case, it is strongly influenced by the lifestyle and prices of goods in the Bandung City which shows the need for increased employment and minimum wages in the Bandung City which can indirectly increase the loyalty of residents to stay in the Bandung City. Furthermore, in the city body index there are some interesting things to discuss based on the results of the highest and lowest assessments. The city body index that has the highest score, namely: (1) commercial services: "a variety of restaurants, cafes, inns, and shopping services such as supermarkets and traditional markets" with a score of 4.54; (2) culture and arts: "there is a good variety of cultural and artistic facilities such as museums, movie theaters, and performance halls" with a score of 4.45. Cultural and art facilities show a high value, indicating that there are various cultural and art facilities such as performance halls, cinemas and others in Bandung. Cultural facilities can be one of the attractors of interest (Kourtit and Nijkamp, 2019). It is conceivable that cultural heritage assets in the city can create many benefits to be evaluated. Cities contain a wealth of cultural heritage, considered as a collection of man-made art facts that have explicit and recognized connotations to the local past and are a self-identifying landmark for a place (Zukin, 2012).

There are monuments and historical buildings as tourist destinations that are proclaimed to be a national cultural heritage that has its own charm and the wealth of history is maintained and protected by regional regulations. This shows that Bandung is one of the cities that has its own uniqueness compared to other cities in Indonesia so that it becomes a city famous for its history; and (3) Diversity: "has a diverse population and a gathering place for immigrants from outside the city" with a score of 4.33. This diversity is formed by the entry of various ethnic groups from within the country and abroad such as tribes from Java, Minahasa, Minangkabau, Batak, Ambon, China, the Netherlands and others (Fadhilah, et al., 2022). The urge to improve welfare triggers population migration for economic reasons (Jorgensen and Stedman, 2006). The average migrant population is of productive age as a job seeker in the industrial, tourism, trade, hospitality and transportation sectors (Fadhilal and Haryatiningsih, 2022). However, in addition to economic factors, there are also educational factors that attract the creation of population diversity in the Bandung City. On the other hand, the city body indexes that have the lowest scores are: (1) housing with a score of 3.80; (2) walkability with a score of 3.71; and (3) government with a score of 3.22.

Bandung is a city that has many public facilities with adequate quality both in education, health, shops, and others as shown by the highest index value. Behind the superiority of Bandung, there are several things that need to be considered regarding housing problems, where the housing index has a value of 3.80. Some parts of Bandung City still have slums that grow along the banks of the Cikapundung watershed and cause various river pollution problems such as flooding due to siltation and garbage (Kusumawardhani, et al., 2026), as well as good walking facilities as the index value shows a value of 3.71 which is indicated by damage to sidewalks that provide inconvenience to the community and service routes that are less known by the community so that it needs to be considered in the development of Bandung city. Road sidewalks that do not meet existing standardization guidelines have conditions that are far from feasible so that they interfere with the comfort of pedestrians in the Bandung City (Fitriani, 2014).

Development in the Bandung City requires an increase in active participation from the community in making decisions and urban planning, this is indicated by the value of the city love index on the government variable of 3.22, so there is a need for collaborative planning in urban planning, namely collaboration between the community and the government to develop cities in accordance with the aspirations of the community so that community welfare can be achieved. This is very important to do, so the role of the community is absolute

in supporting the success of urban development, without community participation, development will be difficult to receive increased welfare. The participation of the community can be done by increasing communication rationality in urban planning which can be done in three communication methods, namely verbal, nonverbal, and long-distance communication, which can take the form of focus group discussions (FGDs), hearings, advice, suggestions, considerations, public opinions, polls, plebiscites, referendums, participatory mapping, and so on in a political and social decision-making process. Associated with legal protection for the community, participation is a form of preventive legal protection (Yusuf, 2014).

Although the Bandung city government has implemented the Smart City concept based on Mayor Regulation Number 1470 of 2018 concerning the Bandung Smart City Master Plan 2018-2023, there are many obstacles to realizing smart people or community participation in the development process must be improved (Yusuf, 2014). Residents' attachment to the urban environment is an important factor that forms a love of the city, where each resident feels environmentally and socially bound, which is one of the important ingredients of residential-oriented urban planning and becomes one of the development capitals through the perspective of the community and love of the urban environment emphasizing the importance of urban planning oriented towards sustainability, welfare, and inclusiveness.

#### **4.2. City Love Index Model**

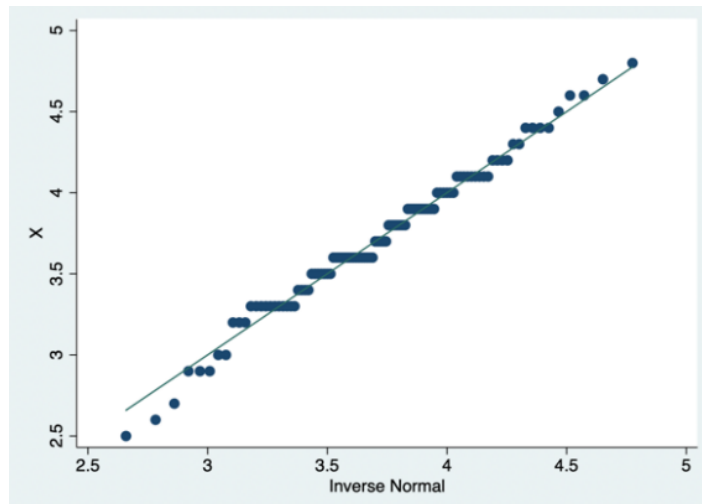
The step to determine the effect of the independent variable on the dependent variable was carried out using simple linear regression analysis to determine the level of influence of the city soul variable (X) on the city body (Y), through stages: (1) data normality test and (2) simple linear regression, which includes: (a) hypothesis, (b) regression equation, (c) coefficient of determination test (R<sup>2</sup>), and (d) F test and T test. Before simple linear regression analysis is carried out, it is necessary to test the normality of the data (Table 3). variables X and Y have a probability value > 0.05 so that the data is declared normally distributed (Figure 3 and 4).

The constant coefficient value is 1.367351 with a positive value which means that in the absence of the city soul variable (X), the city body variable (Y) will increase by 136.73%. The beta coefficient value of the city soul (X) is 0.60, if other variables are constant and variable X has increased by 1%, the city body variable (Y) will increase by 60.07% and vice versa if other variables are constant and variable X has decreased by 1%.

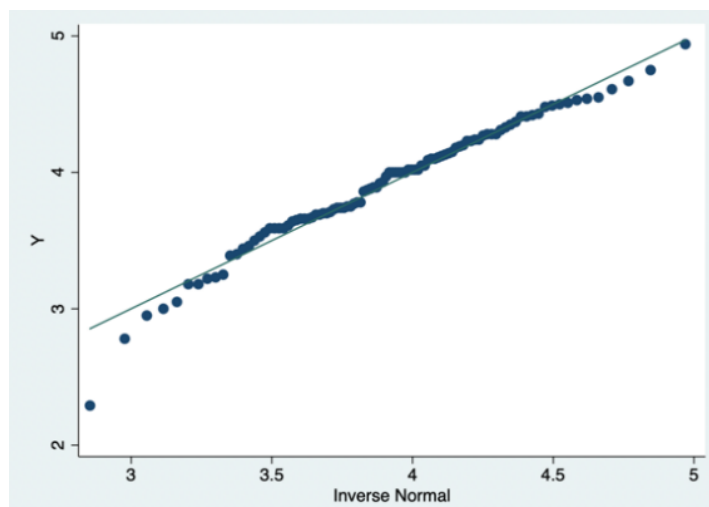
The coefficient of determination test is conducted to determine the extent to which the city soul variable (X) is able to explain the city body variable (Y). it can be seen that the R Square value is 0.3607. The determinant value shows that the city soul variable (X) is able to explain the city body variable (Y) by 36.07% while the remaining 63.93% is explained by other variables obtained from the subtraction of  $1.00 - 0.36 = 0.64$ .

After that, the F test is carried out with the calculated F value. if  $F > F$  table or  $\text{sig} < \alpha$  then  $H_0$  is rejected and  $H_a$  is accepted (influential). The F test shows that the calculated F value is  $55.29 >$  the F table value of 3.94 and the sig value is  $0.0000 < 0.05$ , it can be stated that  $H_0$  is rejected and  $H_a$  is accepted, this means that the city soul variable (X) has an effect on the city body variable (Y). The t test results show the t value of  $7.44 >$  t table value of 1.98 and a significant value of  $0.000 < 0.05$ . So  $H_0$  is rejected and  $H_a$  is accepted, meaning that the city soul variable partially affects the city body (Y) (Table 4).





**Figure 3.** Normality Graph of Data X



**Figure 4.** Normality Graph of Data Y

**Table 3.** Data Normality Test

Variable	Obs	W	V	z	Prob>z
X	100	0.99444	0.459	-1.728	0.95800
Y	100	0.97834	1.789	1.290	0.09853

**Table 4.** Results of Linear Regression of Soul and Body 1.

X	Coef.	Std. Err.	t	P> t	[95% Conf. Interval]
y	0.6007181	0.0807871	7.44	0.000	0.4403987 0.7610375
_cons	1.367351	0.3180917	4.30	0.000	0.7361085 1.998594

**Table 5.** Results of Linear Regression of Soul and Body 2.

Number of obs	(F1,98)	Prob>F	R-Squared	Adj R-Squared	Root MSE
100	55.29	0.0000	0.3607	0.3542	0.36499

Based on the results of the percentage level of student participation above, it can be concluded that there is an influence of the Teaching Campus program in increasing student civic engagement, as can be seen from the percentage table which indicates students are at the highest level of participation, namely citizen control, meaning that students are voluntarily involved in every series of activities from planning program, program planning and evaluation in each of its activities. Students provide input ideas for the success of the Teaching Campus program in their placement schools with the provision of knowledge and skills they have learned on campus that can be implemented in the community.

Based on the simple linear regression results above, it shows that the city soul has a positive effect on the city body (Table 5). This indicates that the greater the participation of the people of Bandung, the more Bandung's infrastructure development will increase. Community participation in urban development will provide various pros and cons for policy making, this relates to the understanding of the community in the concept of development. However, there is a clear need for cities to balance economic vitality, historical-cultural identity, social and community capital, and sustainable living spaces that make community-centered urban governance, so that it can be a shared responsibility in the urban environment as the basis for urban development in the Bandung City. The city love index can be used as an indicator to evaluate the planning and development of a city based on the perspective of the community with the aim of accelerating the achievement of community welfare in the Bandung City through improved urban governance. The problem of urban governance lies in its complexity, which can be in the form of its own diversity to the dynamics of society which is influenced by various conditions and changes that occur in the community environment, such as climate change, economic conditions, technological innovation, and the spread of the Covid-19 pandemic that has occurred in recent years.

From a social perspective, related to status and role planning in an institution, the sociological institutionalism approach can be used in an effort to increase the index of urban love and community involvement. This approach is an institutional planning approach that prioritizes networks in planning in the context of broader social structures. Traditional institutional planning forms are drawn from the inherent rationality or efficiency of their form and role, while culture is seen as something completely different. New institutionalists in sociology argue that many of the institutional forms and procedures used by modern organizations are not adopted simply because they are efficient in line with transcendent rationality, but rather should be seen as specific cultural practices and involve the society assimilated in the organization, and should not focus on increasing efficiency in the achievement of formal goals alone, but as the result of processes associated with the transmission of cultural practices in general, so that even the most bureaucratic institutional practices should be explainable in cultural terms. A responsive society and effective governance are the most important instruments in building new opportunities to improve the quality of urban life. In addition, people's trust in government can bring about the stability that is the sine qua non for a widely shared love of cities making the connection between the two inseparable.

## **5. CONCLUSION**

The research results indicate the level of public appreciation of development in Bandung City. The highest values in the city soul are identity (4.49), attachment (4.28), and satisfaction (4.00), suggesting a high appreciation. However, there are lower values in employment (3.40), loyalty: not moving (3.35), loyalty: recommending (3.27), and income (3.00). In the city body,

the highest values are in commercial services (4.54), culture and arts (4.45), and diversity (4.33), while housing (3.80), walkability (3.71), and government (3.22) have lower values. Improvement in housing, walkability, and government involvement is needed. Community participation should be increased, along with employment opportunities and minimum wages to enhance loyalty and prosperity. Positive regression results show that a good public perception improves urban governance and development in Bandung City. The city love index assesses community involvement in urban governance, aiming for a balanced urban ecosystem and prosperity.

## 6. REFERENCES

- Agovino, M., Crociata, A., Quaglione, D., Sacco, P., and Sarra, A. (2017). Good taste tastes good. Cultural capital as a determinant of organic food purchase by Italian consumers: Evidence and policy implications. *Ecological Economics*, 141(22), 66-75.
- Almulhim, A. I., Bibri, S. E., Sharifi, A., Ahmad, S., and Almatar, K. M. (2022). Emerging trends and knowledge structures of urbanization and environmental sustainability: A regional perspective. *Sustainability*, 14(20), 13195.
- Fadhilah, A., Ramdani, M. S., and Haryatiningsih, R. (2022). Karakteristik Pendatang Di Kecamatan Sukajadi Kota Bandung Tahun 2020. *Nuansa Akademik: Jurnal Pembangunan Masyarakat*, 7(2), 187-202.
- Fitriani, E. (2014). Evaluasi pemenuhan standar trotoar di central business district (Studi kasus kota Bandung). *Warta Penelitian Perhubungan*, 26(11), 663-676
- Glaeser, E. L., Kolko, J., and Saiz, A. (2001). Consumer city. *Journal of economic geography*, 1(1), 27-50.
- Gottlieb, P. D., and Joseph, G. (2006). College-to-work migration of technology graduates and holders of doctorates within the United States. *Journal of Regional Science*, 46(4), 627-659.
- Hermawati, R., Paskarina, C., and Runiawati, N. (2017). Toleransi antar umat beragama di Kota Bandung. *Umbara*, 1(2). 105-124
- Jain, M., and Rohrer, H. (2022). Assessing transformative change of infrastructures in urban area redevelopments. *Cities*, 124(24), 1-12.
- Jorgensen, B. S., and Stedman, R. C. (2006). A comparative analysis of predictors of sense of place dimensions: Attachment to, dependence on, and identification with lakeshore properties. *Journal of environmental management*, 79(3), 316-327.
- Kourtit, K., and Nijkamp, P. (2019). Creative actors and historical-cultural assets in urban regions. *Regional Studies*, 53(7), 977-990.
- Kourtit, K., Neuts, B., Nijkamp, P., and Wahlström, M. H. (2021). A structural equation model for place-based city Love: An application to Swedish cities. *International regional science review*, 44(4), 432-465.
- Kusumawardhani, V., Sutjahjo, S. H., and Dewi, I. K. (2016). Penyediaan Perumahan Dan Infrastruktur Dasar Di Lingkungan Permukiman Kumuh Perkotaan (Studi Kasus Di Kota Bandung). *NALARs*, 15(1), 13-24.

- Lindell, M. K., and Prater, C. S. (2007). Critical behavioral assumptions in evacuation time estimate analysis for private vehicles: Examples from hurricane research and planning. *Journal of Urban Planning and Development*, 133(1), 18-29.
- Mardiansjah, F. H., and Rahayu, P. (2019). Urbanisasi dan pertumbuhan kota-kota di Indonesia: Suatu perbandingan antar-wilayah makro Indonesia. *Jurnal Pengembangan Kota*, 7(1), 91-110.
- Mawkhlieng, D., and Debbarma, S. (2018). Conditions of urban slums and its quality of life in india: A Regional Analysis. *Journal of Regional Development and Planning*, 7(1), 71-84.
- Naude, W., Rossouw, S., and Krugell, W. (2009). The non-monetary quality of city life in South Africa. *Habitat international*, 33(4), 319-326.
- Rahmawati, F., and Isya, H. R. M. determining the location of the earthquake shelter evacuation. *Jurnal Pendidikan Ilmu Sosial*, 31(2). 131-138
- Scott, A. J. (2017). Urbanization, work and community: The logic of city life in the contemporary world. *Quality Innovation Prosperity*, 21(1), 9-30.
- Setiawan, I. (2010). Migrasi penduduk menuju daerah pinggiran kota Bandung dan implikasinya terhadap kualitas lingkungan permukiman. *Jurnal Geografi Gea*, 10(2), 1-7.
- Setiowibowo, S., Kurniawan, E. B., and Usman, F. (2020). Hubungan pembangunan perumahan terhadap aspek sosial ekonomi masyarakat dan lingkungan permukiman di kelurahan mlajah. *Planning for Urban Region and Environment Journal (PURE)*, 9(4), 131-142.
- Umar, A. (2012). Pengaruh upah, Motivasi kerja, dan kepuasan kerja terhadap kinerja pekerja pada industri manufaktur di kota Makassar. *Jurnal Aplikasi Manajemen*, 10(2), 406-418.
- Whisler, R. L., Waldorf, B. S., Mulligan, G. F., and Plane, D. A. (2008). Quality of life and the migration of the college-educated: A life-course approach. *Growth and Change*, 39(1), 58-94.
- Yusuf, A. W. (2014). Partisipasi masyarakat dalam pembangunan kota yang berkelanjutan dan berkeadilan. *Jurnal Administrasi Publik*, 11(2). 53-68
- Zukin, S. (2012). The social production of urban cultural heritage: Identity and ecosystem on an Amsterdam shopping street. *City, Culture and Society*, 3(4), 281-291.