



Comparison Analysis of Bubble Sort and Insertion Sort Algorithm on the Selection of a Shop According to the Criteria

Deandy Zahran Vierdansyah¹ *, Ghalbin Al Ghafiq², Muhammad Taufik Dwi Putra³, Deden Pradeka⁴

Departemen of Computer Engineering, Universitas Pendidikan Indonesia, Indonesia

Correspondence: E-mail: deandy@upi.edu

ABSTRACT

In choosing a place to open a business was very important and must be considered. One of the suitable places to open a business was a kiosk. This study aimed to facilitate the public in determining the location of the sales kiosk. This was motivated by the limitations and speed in accessing information about the location of the kiosk. In this study, there was a process system for comparing execution time analysis using the Bubble Sort and Insertion Sort algorithms based on the criteria that had been provided. There were criteria that could be selected by users, including the location of the sales kiosk, the area and the available kiosk rental price per year. So that this research system could overcome community problems in terms of limitations and the speed of accessing information that was less efficient about the location of the sales kiosk. After the implementation and analysis of execution time on sales kiosk data as many as 10 places in the C++ programming language using Codeblocks, the results obtained were the use of the Insertion Short algorithm, the use of the Insertion Sort algorithm was more effective in sorting the kiosk places according to the criteria provided.

ARTICLE INFO

Article History:

Submitted/Received 10 Feb 2023

First Revised 02 Mar 2023

Accepted 20 Mar 2023

First Available online 01 Apr 2023

Publication Date 01 Apr 2023

Keyword:

Bubble Sort,

Decision Support System,

Execution Time Efficiency,

Insertion Sort.

Kiosk Selection,

1. INTRODUCTION

For people who are wanting to open a business by looking for a previous place, this is the start of running their business. The choice of business location is a factor that must be considered. One of the suitable places to be used as a place of business is a kiosk. Kiosk is a small shop that was built as a place of business for people who want to start a business. Usually, kiosks are used to sell a variety of goods. Besides being used to sell goods, the kiosk can also be used as a place to eat, for example a café

The density of the population is increasing, especially in urban areas, so it is not easy to find a place of business for people who want to start a business. There are several problems encountered when looking for a place of business that suits your taste, this causes limitations and inefficient time in finding information about the place of business you want to use for business.

Technological developments are now developing very rapidly, the use of information and communication technology in finding information about places of business, especially sales kiosks, is easy to do. So that it can be used as a solution to solve the problems that occur. The design system for the utilization of information and communication technology is designed using a process of comparing execution times in sorting information regarding the criteria that have been provided starting from the smallest to the largest. The available criteria include the location of the kiosk, the size and price of the kiosk rental per year, so that it can provide an overview for people who are looking for a selling kiosk.

Completeness of information is the most important part of a system, because it will make it easier for users to use. To be able to obtain better and faster data access, it is expected that data processing will also be better. Sequencing data plays an important role which is considered by many so that problems especially regarding processing will be better and faster to solve [1]. There are various solving procedures for solving data sorting problems or it can be called a sorting algorithm.[5]

The designed technology and information can provide an overview of society in general, and to the kiosk seeker. The system is designed using the process of searching and selecting the appropriate kiosk by showing the latest, detailed and complete information on prices, facilities, and location. In determining the place of business this factor is the most important factor because it can adjust the finances that we have. Especially in this day and age, it's hard to find a place of business that is cheap and has facilities according to what we want, right.

Therefore, here we are designing a system which will later bring up kiosks with rental prices and an area according to the wishes of people who want to start a business. By utilizing this system, it will make it easier for people who want to choose a kiosk according to the criteria that have been provided. And later it will display kiosks with rental prices and area from smallest to largest.

The process of searching for data can be optimized if it is stored in a sequential way, which is the importance of sorting. One important aspect of optimizing the speed of the sorting process is the level of efficiency. If the algorithm has high efficiency, then the process will make a faster time and can process more detailed data. There are several factors that are considered in deciding the community to choose the location of the kiosk. The aspects that most determine the location of the kiosk are the perception of the rental price, public facilities, and location.

In this research, there is a process analysis system for comparing the execution time of the sorting algorithm, namely using the Bubble Sort and Insertion Sort algorithms in the C++

programming language using CodeBlocks Software [2]. This study aims to determine the sorting algorithm that has a faster level of execution time efficiency of sorting data. So that it can build a decision support system for selecting kiosks in the community so that it becomes a solution in finding sales stalls quickly and efficiently.[4]

The purpose of this research is to build a decision support system for choosing a kiosk. Where later will compare the 2 algorithms based on execution time.[6] The sorting algorithm that has the highest efficiency will result in a faster execution time. The results will later prove which algorithm is more efficient in finding kiosk data in the Jakarta area. Maybe this system can be useful for people who want to start a business and can also help people find kiosks according to the criteria they want.

2. METHODS

In this study, data analysis was conducted using a dataset consisting of 10 sales kiosks. The kiosks were categorized based on three criteria: area, kiosk rental price per year, and kiosk location. To analyze and compare the data, two sorting algorithms, namely bubble sort and insertion sort, were implemented using the C++ programming language. These sorting algorithms were utilized to arrange the kiosks based on the specified criteria, allowing for a systematic comparison and evaluation of the kiosk data.[7]

2.1. Research Stages

This research comprises several stages, as illustrated in **Figure 1**. These stages involve a literature review, design and development, manufacturing and assembly, testing and evaluation, and data analysis. The diagram provides a concise overview of the sequential steps followed in this study, serving as a roadmap for the research process.

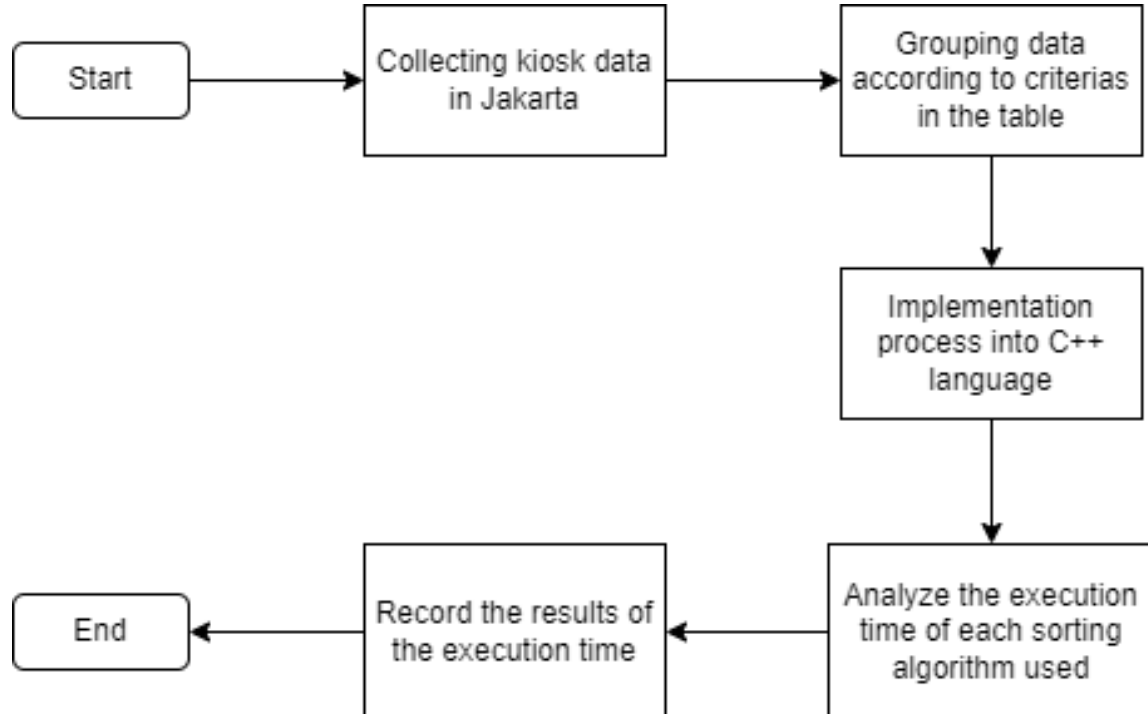


Figure 1. Research Stages.

2.2. Data Collection

During the data collection process, we gathered information from research results using the Google search engine. The data was sourced from a specific website, namely <https://www.99.co/id/sewa/kiosk>, which provides listings for kiosk rentals. By accessing this website, we obtained relevant data related to kiosk rental information, including details such as prices, locations, and available amenities. This data served as a valuable resource for our research, allowing us to analyze and evaluate kiosk rental trends and patterns.

From the results of collecting search data for kiosks in Jakarta, there were 10 sales kiosk data, shown in **Table 1**.

Table 1. Kiosk Data in Jakarta.

KIOSK DATA IN JAKARTA				
No.	Kiosk Name	Area (m ²)	Rent Cost/Year (Rp.)	Location
1.	Kios Gading Nias	2	18.000.000	North Jakarta
2.	Kios PGC	5	3.900.000	East Jakarta
3.	Kios Palmerah	24	55.000.000	West Jakarta
4.	Kios Pondok Labu Cilandak	30	40.000.000	South Jakarta
5.	Kios Tanah Abang Blok B	4	25.000.000	Central Jakarta
6.	Kios Pasar Laris	6	15.000.000	West Jakarta
7.	Kios Kelapa Gading	8	30.000.000	North Jakarta
8.	Kios Pasar Senen	12	50.000.000	Central Jakarta
9.	Kios Ujung Menteng	36	1.800.000	East Jakarta

2.3. Data Processing

Once the data has been collected, the subsequent step involves processing the gathered information into structured data tables. These tables are organized and grouped based on predetermined criteria, including the kiosk name, area of the kiosk building, kiosk rental price per year, and the location of each kiosk (**Table 1**). By categorizing the data according to these criteria, we can effectively organize and analyze the information, enabling us to identify patterns, trends, and insights related to kiosk rentals. This data processing stage is crucial in facilitating further analysis and decision-making based on the collected data.

2.4. Implementation to C++ programming language

The implementation process of the sorting algorithms in the C++ programming language utilizes the CodeBlocks software for development. This software provides a user-friendly environment for writing, compiling, and executing the code.[8] The implementation involves comparing the data of 10 kiosks based on the criteria of annual rental prices and kiosk building areas. The data table is then subjected to the execution of both the Bubble Sort and Insertion Sort algorithms, which are widely used for sorting tasks. By measuring and comparing the execution time of these algorithms, we can evaluate their efficiency and performance in sorting the kiosk data effectively. This analysis will provide valuable insights into the effectiveness of different sorting approaches and assist in optimizing the sorting process for future implementations.

2.4.1. Insertion Sort (Kiosk Building Area)

On the first menu in the programming that has been made is the command used to sort the smallest to largest values in the kiosk building area data using the Insertion Sort algorithm:

```
void insertionLuas(kios arr[], int n)
{
    int j;
    kios key;
    for(int i = 1; i<n; i++) {
        key = arr[i];
        j = i;
        while(j > 0 && arr[j-1].luas>key.luas) {
            arr[j] = arr[j-1];
            j--;
        }
        arr[j] = key;
        for(int k = 0; k<n; k++){
            cout << arr[k].luas << " ";
        }
        cout << endl;
    }
}
```

Figure 1. Insertion Sort (Kiosk Building Area).

2.4.2. Insertion Sort (Kiosk Rental Cost Per Year)

Furthermore, on the second menu in the programming that has been made is the command used to sort the smallest to largest values in the kiosk rental cost data per year:

```
void insertionHarga(kios arr[], int n)
{
    int j;
    kios key;
    for(int i = 1; i<n; i++) {
        key = arr[i];
        j = i;
        while(j > 0 && arr[j-1].harga>key.harga) {
            arr[j] = arr[j-1];
            j--;
        }
        arr[j] = key;
        for(int k = 0; k<n; k++){
            cout << arr[k].harga << " ";
        }
        cout << endl;
    }
}
```

Figure 2. Insertion Sort (Kiosk Rental Cost Per Year).

2.4.3. Bubble Sort (Kiosk Building Area)

On the third menu in the programming that has been made is the command used to sort the smallest to largest values in the data for the area of the next kiosk building using the Bubble Sort algorithm:

```
void bubbleLuas(kios arr[], int n)
{
    int i, j;
    bool swapped;
    for (i = 0; i < n-1; i++)
    {
        swapped = false;
        for (j = 0; j < n-i-1; j++)
        {
            if (arr[j].luas > arr[j+1].luas)
            {
                swap(&arr[j], &arr[j+1]);
                swapped = true;
            }
        }
        for(int k = 0; k<n; k++){
            cout << arr[k].luas << " ";
        }
        cout << endl;
    }
    if (swapped == false)
        break;
}
```

Figure 3. Bubble Sort (Kiosk Building Area).

2.4.4. Bubble Sort (Kiosk Rental Cost Per Year)

Furthermore, on the second menu in the programming that has been made is the command used to sort the smallest to largest values in the kiosk rental cost data per year:

```
void bubbleLuas(kios arr[], int n)
{
    int i, j;
    bool swapped;
    for (i = 0; i < n-1; i++)
    {
        swapped = false;
        for (j = 0; j < n-i-1; j++)
        {
            if (arr[j].luas > arr[j+1].luas)
            {
                swap(&arr[j], &arr[j+1]);
                swapped = true;
            }
        }
        for(int k = 0; k<n; k++){
            cout << arr[k].luas << " ";
        }
        cout << endl;
    }
    if (swapped == false)
        break;
}
```

Figure 4. Bubble Sort (Kiosk Rental Cost Per Year).

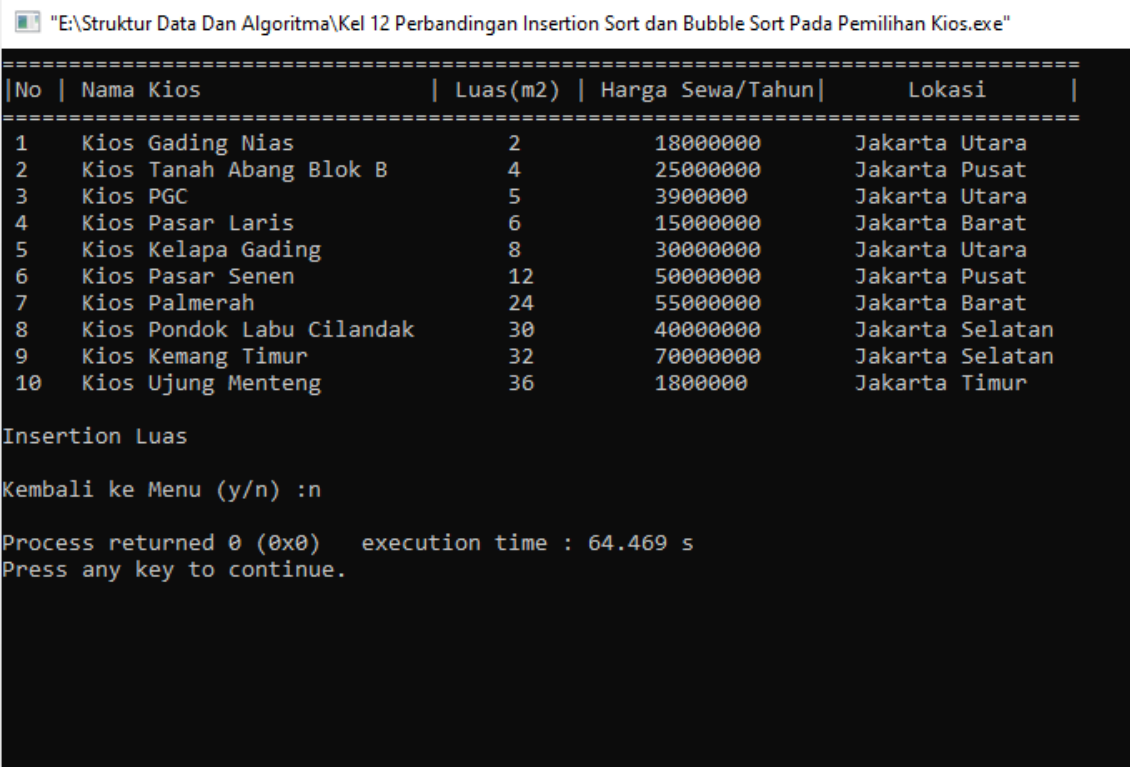
2.5. Result Analysis

Analyze the execution time of the two sorting algorithms. The analysis process is obtained from the results of the execution time data of the insertion sort and bubble sort algorithms which are calculated using units of seconds based on 10 sales kiosk data in Jakarta which have been grouped based on predetermined criteria.

3. RESULTS AND DISCUSSION

After analyzing the execution time of the insertion sort and bubble sort algorithms, record the execution results of the two sorting algorithms. In a comparison of the execution time results of Insertion sort and Bubble Sort on the area of the kiosk building, the results are obtained.

In the criteria for the area of the kiosk building (**Figure 2.** and **Figure 3.**) the results of implementation into the C++ programming language using CodeBlock Software show the sorting steps for the area of the kiosk building based on the sorting method of the two sorting algorithms. **Figure 2** shows the 9 process steps for sorting data in the Insertion Sort algorithm for the area of the kiosk building. Furthermore, **Figure 4** shows the 42 process steps for sorting data in the Bubble Sort algorithm for the area of the kiosk building. This shows that the comparison of the data sorting process is longer than Bubble Sort than Insertion Sort.



```

"E:\Struktur Data Dan Algoritma\Kel 12 Perbandingan Insertion Sort dan Bubble Sort Pada Pemilihan Kios.exe"
=====
|No | Nama Kios                | Luas(m2) | Harga Sewa/Tahun| Lokasi      |
=====
1  Kios Gading Nias         2         18000000         Jakarta Utara
2  Kios Tanah Abang Blok B 4         25000000         Jakarta Pusat
3  Kios PGC                 5         39000000         Jakarta Utara
4  Kios Pasar Laris        6         15000000         Jakarta Barat
5  Kios Kelapa Gading      8         30000000         Jakarta Utara
6  Kios Pasar Senen       12        50000000         Jakarta Pusat
7  Kios Palmerah          24        55000000         Jakarta Barat
8  Kios Pondok Labu Cilandak 30        40000000         Jakarta Selatan
9  Kios Kemang Timur      32        70000000         Jakarta Selatan
10 Kios Ujung Menteng     36        18000000         Jakarta Timur

Insertion Luas

Kembali ke Menu (y/n) :n

Process returned 0 (0x0)   execution time : 64.469 s
Press any key to continue.

```

Figure 5. Process Steps for Ordering Insertion Sort Kiosk Building Area.

```

"E:\Struktur Data Dan Algoritma\Kel 12 Perbandingan Insertion Sort dan Bubble Sort Pada Pemilihan Kios.exe"
=====
Insertion Sort
=====
1. Luas
2. Harga
=====
Bubble Sort
=====
3. Luas
4. Harga
=====
Pilih Menu = 1

Insertion Luas
5 8 24 32 4 6 2 12 36 30
5 8 24 32 4 6 2 12 36 30
5 8 24 32 4 6 2 12 36 30
4 5 8 24 32 6 2 12 36 30
4 5 6 8 24 32 2 12 36 30
2 4 5 6 8 24 32 12 36 30
2 4 5 6 8 12 24 32 36 30
2 4 5 6 8 12 24 32 36 30
2 4 5 6 8 12 24 30 32 36
Tekan Enter Untuk Hasil Akhir
    
```

Figure 6. Result of Execution Time of Insertion Sort Kiosk Building Area.

```

"E:\Struktur Data Dan Algoritma\Kel 12 Perbandingan Insertion Sort dan Bubble Sort Pada Pemilihan Kios.exe"
Bubble Luas
5 8 24 32 4 6 2 12 36 30
5 8 24 32 4 6 2 12 36 30
5 8 24 32 4 6 2 12 36 30
5 8 24 4 32 6 2 12 36 30
5 8 24 4 6 32 2 12 36 30
5 8 24 4 6 2 32 12 36 30
5 8 24 4 6 2 12 32 36 30
5 8 24 4 6 2 12 32 30 36
5 8 24 4 6 2 12 32 30 36
5 8 24 4 6 2 12 32 30 36
5 8 4 24 6 2 12 32 30 36
5 8 4 6 24 2 12 32 30 36
5 8 4 6 2 24 12 32 30 36
5 8 4 6 2 12 24 32 30 36
5 8 4 6 2 12 24 32 30 36
5 8 4 6 2 12 24 30 32 36
5 8 4 6 2 12 24 30 32 36
5 4 8 6 2 12 24 30 32 36
5 4 6 8 2 12 24 30 32 36
5 4 6 2 8 12 24 30 32 36
5 4 6 2 8 12 24 30 32 36
5 4 6 2 8 12 24 30 32 36
5 4 6 2 8 12 24 30 32 36
4 5 6 2 8 12 24 30 32 36
4 5 6 2 8 12 24 30 32 36
4 5 2 6 8 12 24 30 32 36
4 5 2 6 8 12 24 30 32 36
4 5 2 6 8 12 24 30 32 36
4 5 2 6 8 12 24 30 32 36
4 5 2 6 8 12 24 30 32 36
4 2 5 6 8 12 24 30 32 36
4 2 5 6 8 12 24 30 32 36
4 2 5 6 8 12 24 30 32 36
4 2 5 6 8 12 24 30 32 36
2 4 5 6 8 12 24 30 32 36
2 4 5 6 8 12 24 30 32 36
2 4 5 6 8 12 24 30 32 36
2 4 5 6 8 12 24 30 32 36
2 4 5 6 8 12 24 30 32 36
2 4 5 6 8 12 24 30 32 36
Tekan Enter Untuk Hasil Akhir
    
```

Figure 7. Bubble Sort Sequencing Process Kiosk Building Area.


```

"E:\Struktur Data Dan Algoritma\Kel 12 Perbandingan Insertion Sort dan Bubble Sort Pada Pemilihan Kios.exe"
=====
|No | Nama Kios | Luas(m2) | Harga Sewa/Tahun | Lokasi |
=====
1 | Kios Gading Nias | 2 | 18000000 | Jakarta Utara
2 | Kios Tanah Abang Blok B | 4 | 25000000 | Jakarta Pusat
3 | Kios PGC | 5 | 39000000 | Jakarta Utara
4 | Kios Pasar Laris | 6 | 15000000 | Jakarta Barat
5 | Kios Kelapa Gading | 8 | 30000000 | Jakarta Utara
6 | Kios Pasar Senen | 12 | 50000000 | Jakarta Pusat
7 | Kios Palmerah | 24 | 55000000 | Jakarta Barat
8 | Kios Pondok Labu Cilandak | 30 | 40000000 | Jakarta Selatan
9 | Kios Kemang Timur | 32 | 70000000 | Jakarta Selatan
10 | Kios Ujung Menteng | 36 | 18000000 | Jakarta Timur

Bubble Luas
Kembali ke Menu (y/n) :n
Process returned 0 (0x0) execution time : 82.374 s
Press any key to continue.

```

Figure 8. Results of Bubble Sort Execution Time Kiosk Building Area.

After the data on the building area of the kiosk has been sorted based on the sorting steps of the Insertion Sort and Bubble Sort algorithms. The results show that the Gading Nias Kiosk in North Jakarta is smaller with an area of 2 m² and the Ujung Menteng Kiosk in East Jakarta is larger with an area of 36 m².

Then in **Figure 2.** and **Figure 4.** show the results of the execution time of each of the two sorting algorithms. Furthermore, the results of the execution time are recorded on the area of the kiosk building from the two sorting algorithms **Table 2.**

In Insertion Sort, the results of the execution time were recorded as 64,469 s, while Bubble Sort was 82,3274 s, this shows that the execution time of the Insertion Sort algorithm in sorting data on the size of the kiosk building is faster than Bubble Sort.

In the criteria for kiosk rental prices per year **Figure 6.** and **Figure 8.** the results of implementation into the C++ programming language using CodeBlock Software show the steps for sorting kiosk rental prices per year based on the sorting method of the two sorting algorithms. **Figure 6.** shows the 9 process steps for sorting data in the Insertion Sort algorithm for the area of the kiosk building. Furthermore, **Figure 4** and **Figure 5.** shows the 45 process steps for sorting data in the Bubble Sort algorithm at the kiosk rental price per year. This shows that the comparison of the data sorting process is longer than Bubble Sort than Insertion Sort.

After the data on the kiosk rental price per year has been sorted based on the sorting steps of the Insertion Sort and Bubble Sort algorithms. The results show that the Ujung Menteng Kiosk in South Jakarta is smaller, with an annual rental price of 1,800,000 and the East Kemang Kiosk in South Jakarta is larger, with a price of 70,000,000.

Table 2. Execution Time Result Kiosk Building Area.

Execution Time (s)	
Insertion sort	Bubble sort
64.469 s	82.3274 s

```

"E:\Struktur Data Dan Algoritma\Kel 12 Perbandingan Insertion Sort dan Bubble Sort Pada Pemilihan Kios.exe"
=====
Insertion Sort
=====
1. Luas
2. Harga
=====
Bubble Sort
=====
3. Luas
4. Harga
=====
Pilih Menu = 2

Insertion Harga
3900000 30000000 55000000 70000000 25000000 15000000 18000000 50000000 1800000 40000000
3900000 30000000 55000000 70000000 25000000 15000000 18000000 50000000 1800000 40000000
3900000 30000000 55000000 70000000 25000000 15000000 18000000 50000000 1800000 40000000
3900000 25000000 30000000 55000000 70000000 15000000 18000000 50000000 1800000 40000000
3900000 15000000 25000000 30000000 55000000 70000000 18000000 50000000 1800000 40000000
3900000 15000000 18000000 25000000 30000000 55000000 70000000 50000000 1800000 40000000
3900000 15000000 18000000 25000000 30000000 50000000 55000000 70000000 1800000 40000000
1800000 3900000 15000000 18000000 25000000 30000000 50000000 55000000 70000000 40000000
1800000 3900000 15000000 18000000 25000000 30000000 40000000 50000000 55000000 70000000
Tekan Enter Untuk Hasil Akhir
    
```

Figure 9. Insertion Sort Sequence Process Kiosk Rental Cost Per Year.

```

"E:\Struktur Data Dan Algoritma\Kel 12 Perbandingan Insertion Sort dan Bubble Sort Pada Pemilihan Kios.exe"
-----|-----|-----|-----|-----|
|No | Nama Kios | Luas(m2) | Harga Sewa/Tahun | Lokasi |
-----|-----|-----|-----|-----|
1 | Kios Ujung Menteng | 36 | 1800000 | Jakarta Timur
2 | Kios PGC | 5 | 3900000 | Jakarta Utara
3 | Kios Pasar Laris | 6 | 15000000 | Jakarta Barat
4 | Kios Gading Nias | 2 | 18000000 | Jakarta Utara
5 | Kios Tanah Abang Blok B | 4 | 25000000 | Jakarta Pusat
6 | Kios Kelapa Gading | 8 | 30000000 | Jakarta Utara
7 | Kios Pondok Labu Cilandak | 30 | 40000000 | Jakarta Selatan
8 | Kios Pasar Senen | 12 | 50000000 | Jakarta Pusat
9 | Kios Palmerah | 24 | 55000000 | Jakarta Barat
10 | Kios Kemang Timur | 32 | 70000000 | Jakarta Selatan

Insertion Harga
Kembali ke Menu (y/n) :n
Process returned 0 (0x0) execution time : 55.019 s
Press any key to continue.
    
```

Figure 10. Result of Execution Time of Insertion Sort Kiosk Rental Cost Per Year.

Table 2. Results of Execution Time Kiosk Rental Cost Per Year

Waktu Eksekusi (s)	
Insertion sort	Bubble sort
55.019 s	67.465 s

After the data on the building area of the kiosk has been sorted based on the sorting steps of the Insertion Sort and Bubble Sort algorithms. Then in Figures 7 and 9 show the results of the execution time of each of the two sorting algorithms. Furthermore, the results of the execution time are recorded at the kiosk rental prices per year from the two sorting algorithms (Table 3).

In Insertion Sort, the results of the execution time were recorded as 55,019 s, while Bubble Sort was 67,465 s. This shows that the execution time of the Insertion Sort algorithm in sorting data on the size of the kiosk building is faster than Bubble Sort.

Based on the results of the data kiosk that has been implemented in the C++ programming language above, it can be seen that the insertion sort algorithm is faster and more effective than the bubble sort algorithm in sorting data. The time difference is quite a lot, around 10-15 seconds. It can also be seen that the results of bubble sort are longer than insertion sort.

4. CONCLUSION

After conducting an experiment by collecting 10 kiosk data with the criteria of area, price, and location, it can be seen from the criteria for the area of the Ujung Menteng kiosk being the largest kiosk with an area of 36 m² and the Gading Nias kiosk being the smallest kiosk with an area of 2 m², on the price criteria for Kemang kiosks Timur is the most expensive stall with a price of 70 million per year and the Ujung Menteng kiosk is the cheapest stall with a price of 1.8 million per year.

In the comparison of execution time it can be concluded that the insertion sort algorithm is faster than the bubble sort algorithm. The insertion sort algorithm's sorting is also less, whereas in bubble sort the sorting is quite long. Based on this research, it can be seen which algorithm is more efficient in execution time and it can also be seen which sequence is less. And the execution results are quite fast and can work well. Maybe in the future it will provide other features such as adding distance to kiosks, facilities, location placement, and images and others. By adding this feature, it will make it easier for the public to choose a kiosk according to their wishes, criteria, needs and convenience of a kiosk for those who want to start their business. Hopefully the system that has been created can be useful for people who want to start a business and are looking for kiosks with criteria that match what they want.

5. AUTHORS' NOTE

The authors declare that there is no conflict of interest regarding the publication of this article. Authors confirmed that the paper was free of plagiarism.

6. REFERENCES

- [1] Sunandar, E. (2019). Perbandingan metode selection sort dan insertion sort dalam pengurutan data menggunakan bahasa program java. *PETIR (Jurnal Pengkajian dan Penerapan Teknik Informatika)*, 12(2), 172–178.
- [2] Sitepu, R. R., Yusman, M., dan Febriansyah, F. E. (2017). Implementasi algoritma bubble sort dan selection sort menggunakan arraylist multidimensi pada pengurutan data multi prioritas. *Jurnal Komputasi*, 5(1), 81-87.
- [3] Vakulenko, Y., Oghazi, P., and Hellström, D. (2019). Innovative framework for self-service kiosks: Integrating customer value knowledge. *Journal of Innovation and Knowledge*, 4(4), 262-268.
- [4] Saputra, D. Y. R., Andryana, S., dan Sholihati, I. D. (2021). Analisis perbandingan algoritma bubble sort dan selection sort pada sistem pendukung keputusan pemilihan tempat kost berbasis IOS (iphone operating system). *JUPI (Jurnal Ilmiah Penelitian dan Pembelajaran Informatika)*, 6(2), 318-324.
- [5] Anggreani, D., Wibawa, A. P., Purnawansyah, P., dan Herman, H. (2020). Perbandingan efisiensi algoritma sorting dalam penggunaan bandwidth. *ILKOM Jurnal Ilmiah*, 12(2), 96-103.
- [6] Rahayuningsih, P. A. (2016). Analisis perbandingan kompleksitas algoritma pengurutan nilai (sorting). *EVOLUSI: Jurnal Sains dan Manajemen*, 4(2), 1-12.
- [7] Gunawan, I., Sumarno, S., dan Tambunan, H. S. (2019). Penggunaan algoritma sorting bubble sort untuk penentuan nilai prestasi siswa. *Sistemasi*, 8(2), 296-304.
- [8] Umar, M. F., Munir, E. U., Shad, S. A., and Nisar, M. W. (2014). Enhancement of selection, bubble and insertion sorting algorithm. *Research Journal of Applied Sciences, Engineering and Technology*, 8(2), 263-271.
- [9] Kardono, S. S. (2016). Arsitektur e-kios di Surabaya. *Jurnal Komunika: Jurnal Komunikasi, Media dan Informatika*, 5(1), 37-44.
- [10] Hariri, R. H., Fredericks, E. M., and Bowers, K. M. (2019). Uncertainty in big data analytics: survey, opportunities, and challenges. *Journal of Big Data*, 6(1), 1-16.
- [11] Jouin, M., Gouriveau, R., Hissel, D., Péra, M. C., and Zerhouni, N. (2016). Particle filter-based prognostics: review, discussion and perspectives. *Mechanical Systems and Signal Processing*, 72(1), 2-31.
- [12] Tan, Z., Li, H., and He, X. (2021). Optimizing parcel sorting process of vertical sorting system in e-commerce warehouse. *Advanced Engineering Informatics*, 48(1), 101-279.
- [13] Maramba, I. D., Jones, R., Austin, D., Edwards, K., Meinert, E., and Chatterjee, A. (2022). The role of health kiosks: scoping review. *JMIR Medical Informatics*, 10(3), 1-21.
- [14] Fan, M., Ammah, V., Dakhan, S. A., Liu, R., Mingle, M. N., and Pu, Z. (2021). Critical factors of reacquainting consumer trust in e-commerce. *The Journal of Asian Finance, Economics and Business*, 8(3), 561-573.
- [15] Kusumasari, B., and Alam, Q. (2012). Bridging the gaps: the role of local government capability and the management of a natural disaster in Bantul, Indonesia. *Natural Hazards*, 60(1), 761-779.
- [16] Maalaoui, A., Ratten, V., Heilbrunn, S., Brannback, M., and Kraus, S. (2020). Disadvantage entrepreneurship: decoding a new area of research. *European Management Review*, 17(3), 663-668.

- [17] Friess, E., and Boettger, R. K. (2021). Identifying commonalities and divergences between technical communication scholarly and trade publications (1996–2017). *Journal of Business and Technical Communication*, 35(4), 407-432.
- [18] Chin, J. T. (2020). Location choice of new business establishments: understanding the local context and neighborhood conditions in the United States. *Sustainability*, 12(2), 1-17.
- [19] Kimelberg, S. M., and Williams, E. (2013). Evaluating the importance of business location factors: the influence of facility type. *Growth and Change*, 44(1), 92-117.
- [20] Choi, J. O., Chen, X. B., and Kim, T. W. (2019). Opportunities and challenges of modular methods in dense urban environment. *International Journal of Construction Management*, 19(2), 93-105.